

This is the Day the Lord has Made

C C/B C/A C/G F Em

Eve-ry win-ter melts in-to a-noth-er spring Spring-time brings new life to the

Dm G C C/B C/A C/G

world. Eve-ry year I live to see a - no-ther srping

F Em Dm G

I can't help my self I've got to shout out and sing—

C G F G

This is the day that the Lord has made Let us re-joice and be glad in it.

C G F G C F

This is the day that the Lord has made. Let us re-joicæ and be glad in it. To - day.

C F C C/B

Some-times af - ter a strom there's a rain - bow

C/A C/G F Em Dm G

pain-ted a-cross the sky when you see it it can take your breath a - way

C C/B C/A C/G F Em

Dm G C G F G C G

F G C F C F

C C/B C/A C/G

F Em Dm G

C C/B C/A C/G

F Em Dm G C G F G

C G F G C G F G

Am

Em



Spring-time comes but once a year.

Rain-bows come and go.

Am

Em

F

Em



Storm clouds can cov-er up the morn-ing sun.

But

Dm

Em

F

F/G



no-thing can stop the beau-ty God makes eve-ry DAY!____

C

G

F

G



This is the day that the Lord has made.

Let us re-joice and be glad in it.

C

G

F

G



This is the day that the Lord has made

Let us re-joice and be glad in it

Am

Em



Spring-time comes but once a year.

Rain-bows come and go.

Am

Em

F

Em



Storm clouds can cov-er up the morn-ing sun.

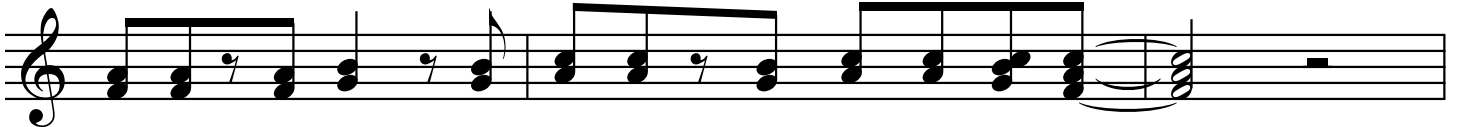
But

Dm

Em

F

F/G



no-thing can stop the beau-ty God makes eve-ry Day.____

C

musical notation on a treble clef staff. The melody consists of quarter notes: C4, D4, E4, F4, G4, A4, B4, and C5. The lyrics are: this is the day the Lord has MADE! The word 'MADE!' is underlined. The notation includes a fermata over the final note and a repeat sign at the end of the staff.